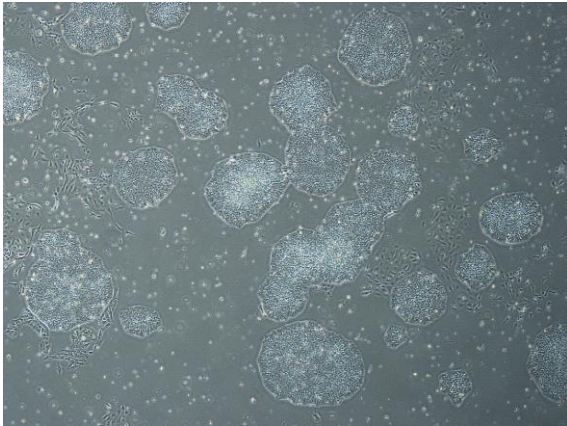
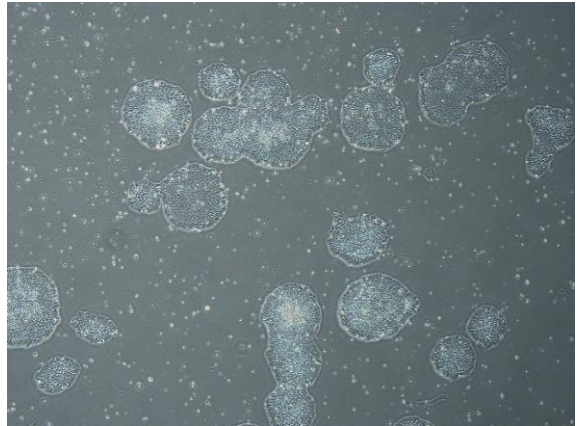


【 CiRA-j-1602 】 Morphology of iPSC colonies

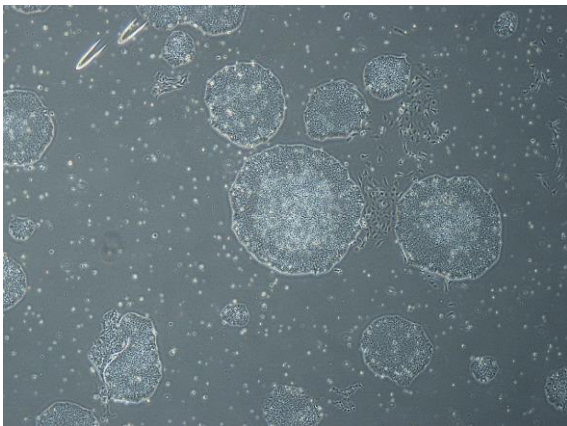
CiRA-j-1602-A: passage-2



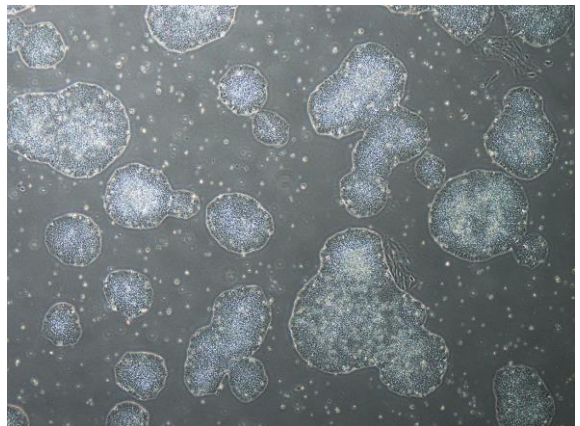
CiRA-j-1602-B: passage-2



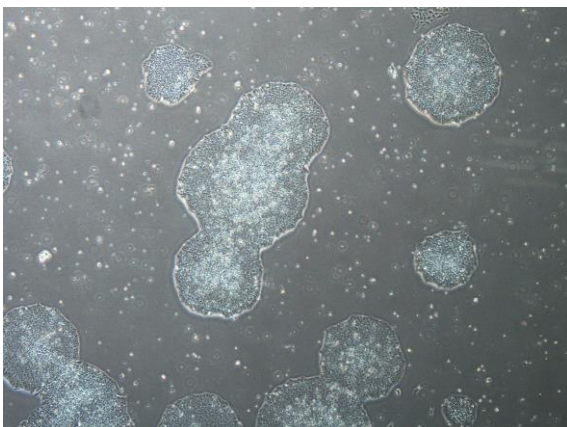
CiRA-j-1602-C: passage-2



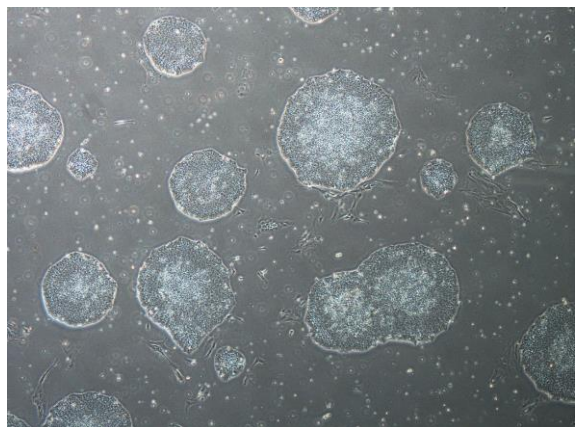
CiRA-j-1602-D: passage-2



CiRA-j-1602-E: passage-2



CiRA-j-1602-F: passage-2



(All images were captured at 4x magnification)